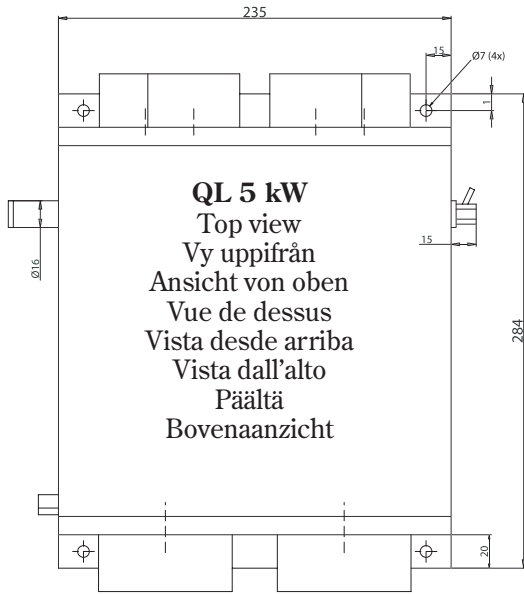


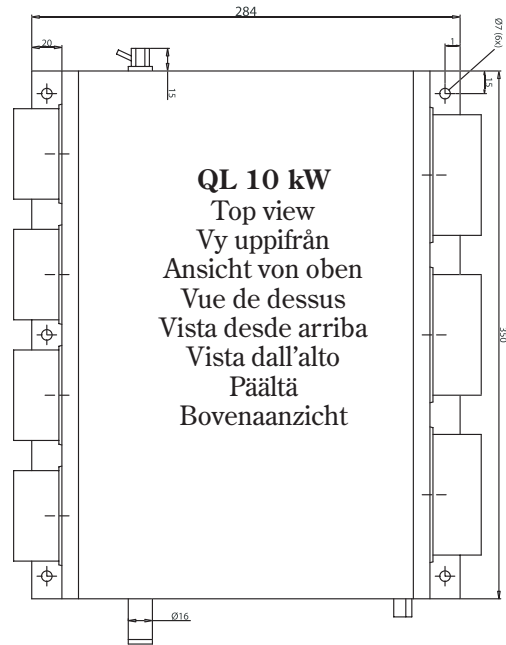
QL Airheater



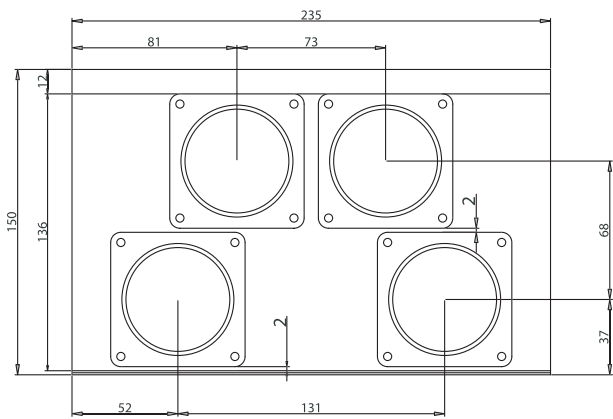
Marine Accessories
Distributed by Volvo Penta



QL 5 kW
 Top view
 Vy uppifrån
 Ansicht von oben
 Vue de dessus
 Vista desde arriba
 Vista dall'alto
 Päältä
 Bovenaanzicht

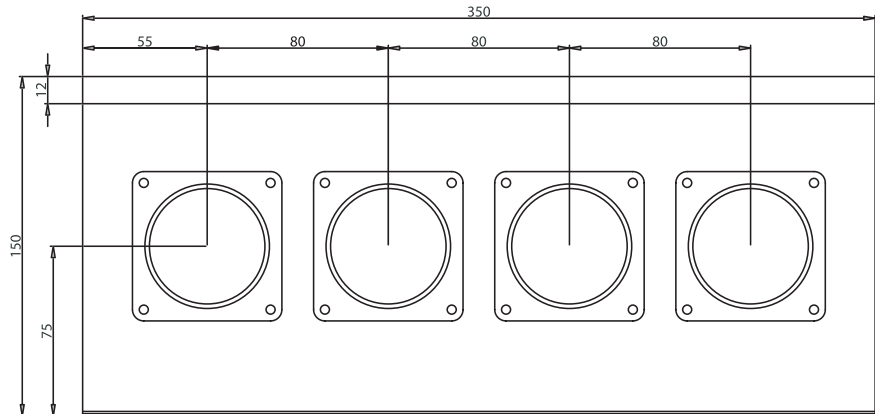


QL 10 kW
 Top view
 Vy uppifrån
 Ansicht von oben
 Vue de dessus
 Vista desde arriba
 Vista dall'alto
 Päältä
 Bovenaanzicht



QL 5 kW
 Front view
 Vy framifrån
 Vorderansicht
 Vue de devan
 Vista desde delante
 Vista anteriore
 Edestä
 Vooraanzicht

QL 10 kW
 Front view
 Vy framifrån
 Vorderansicht
 Vue de devan
 Vista desde delante
 Vista anteriore
 Edestä
 Vooraanzicht



QL Airheater

Congratulations on choosing a QL Airheater. A choice that will further improve the comfort onboard, and make life on your boat more pleasant.

The QL Airheater is manufactured from materials suited to the harsh demands of the marine environment. As the heater has an electrical supply, you should install it somewhere where it won't be subject to direct water splashes.

⚠ IMPORTANT! This product is covered by a limited guarantee. It applies only to the product, and the manufacturer takes no responsibility for damage resulting from incorrect installation or incorrect use.

Installation

The distance between the engine and heater should be as short as possible, in order to minimize heat losses. The best power is achieved with short, large diameter air hoses. Note however that if you are going to run the hot air a long way, it is easier to insulate the coolant coil than the hot air hoses.

The expansion tank for the engine should always be the highest point in the coolant system. However, you can position the QL Airheater up to 60 inches above the engine if required. You then need to open the air bleed to bleed the coolant system, the first time you start the engine and with the engine running.

You can mount the QL Airheater vertically or horizontally.

Electrical connection

The QL Airheater has a 4-pin connector, 1 pin for each speed and 1 negative pin. Make the connections as shown in the connection diagram.

A three-position switch is available as an accessory.

⚠ WARNING! Never connect the negative pin to positive. If you do so a safety resistor will blow and the fan will run only at the highest power.

Air nozzles

The QL Airheater is supplied with four 2.2 in./55 mm outlet nozzles. 2.0 in./50 mm and 2.4 in./60 mm nozzles are available as accessories. The supply air comes through three 3.1 in./80 mm air inlets on the back of the unit. (two air inlets on the 5 kW unit).

You can remove the top plate and turn it round so that the air inlets are used to blow air out instead, with a diameter of 3.1 in./80 mm.

NB! If you install the hot air unit in the engine room or some other area with poor air, we recommend a fresh air intake via a hose.

Water connection

The coolant connections are 0.63 in/16mm. Leave a gap of approximately 0.2 in. between the plate and the hose, so that it will be easier to see any water leaks.

Top up the coolant in the cooling system to make up for the increased volume.

NB! Use flexible hose that is suitable for the coolant temperature of the engine.

Accessories

Hose connection kit	2.0 in./50 mm	41103304
Hose connection kit	2.4 in./60 mm	41103305
Hose connection kit, inlet	3.1 in./80 mm	41103306
3-speed switch		41103307
Output air nozzle	2.0 in./50 mm	41103312
Output air nozzle	2.2 in./55 mm	41103313
Output air nozzle	2.4 in./60 mm	41103308
Air hose	2.0 in./50 mm	41103309
Air hose	2.2 in./55 mm	41103314
Air hose	2.4 in./60 mm	41103310
Air hose	3.1 in./80 mm	41103311

Spare parts

Heating element	5 kW	411033XX
Heating element	10 kW	411033XX
Fan	5 kW	411033XX
Fan	10 kW	411033XX



Marine Accessories
Distributed by Volvo Penta